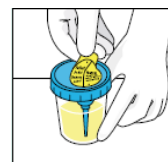
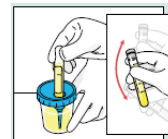


**URINALYSIS AND URINE CULTURE WITH PRESERVATION TUBES**

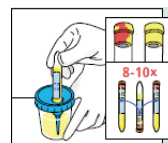
<b>Document number</b>	LA-75-WI-185E_01.80
<b>Revision date</b>	2024-Avr-24
<b>Required Specimen Type</b>	Midstream Urine Sample
<b>Medical Supplies</b>	<ul style="list-style-type: none"> <li>• Sterile urine container with transfer port</li> <li>• Preservation tube for urinalysis (yellow top)</li> <li>• Preservation tube for urine culture (pea green top)</li> </ul>
<b>General Guidelines</b>	<ol style="list-style-type: none"> <li>1) All specimens must include a double identification (first and last name of the patient and date of birth or Medicare number).</li> <li>2) The use of gloves is required when handling all biological specimens.</li> <li>3) A valid requisition must include the following information:             <ul style="list-style-type: none"> <li>• First and last name of the patient, date of birth or Medicare number and gender.</li> <li>• Date and time of specimen collection and signature of collector.</li> <li>• Physician's full name, signature and license number (or other qualified prescriber).</li> <li>• Any relevant clinical information.</li> <li>• Requested tests.</li> </ul> </li> </ol>
<b>Patient Preparation</b>	<ul style="list-style-type: none"> <li>• Refer to the urinalysis collection procedure LA-75-WI-125</li> <li>• Refer to the urine culture collection procedure LA-75-WI-130</li> </ul>
<b>Specimen Collection Instructions</b>	<ol style="list-style-type: none"> <li>1. <b>CAUTION:</b> DO NOT REMOVE the protective label from the top of the Urine Cup. There is a sharp needle under the label.</li> <li>2. Provide the labeled sterile container to the patient to collect the sample.</li> <li>3. <b>A minimum of 25 mL of urine is required in the container for filling both preservation tubes.</b></li> <li>4. Peel back but <b>do not remove</b> the protective sticker to expose the rubber-covered sharp needle, found in the integrated transfer port.</li> <li>5. If a urine culture is requested, gently push the pea green top tube (Culture and Sensitivity with Boric Acid), into the integrated transfer port.  <b>*URINE CULTURE TUBE MUST ALWAYS BE FILLED BEFORE THE URINALYSIS TUBE.</b></li> <li>6. Hold in position until flow stops.</li> <li>7. Remove the preservation tube. <b>Make sure the urine level is above the minimum line, as indicated on the tube's label.</b></li> <li>8. Invert the tube 8-10 times to mix the sample, until the white tablet is dissolved.</li> <li>9. Gently push the Urinalysis Tube (yellow top) into the integrated transfer port.</li> <li>10. Hold in position until flow stops.</li> <li>11. Remove the preservation tube. <b>Please make sure that the urine level is between the minimum and maximum line.</b></li> <li>12. Invert the tube 8-10 times to mix the sample.</li> <li>13. Replace protective sticker back over the integrated transfer port.</li> <li>14. Remove the lid from the cup and dispose in a sharps collector. Dispose of urine according to your facility's policy. Dispose the collection cup in the garbage.  <b>Note : The sterile urine container with needle should not be returned to the laboratory in the biohazard bag with the specimen. This container is not meant for transport. You may only send this back if the container is empty. CDL will then dispose the collection container;</b></li> <li>15. Ensure preservation tubes are properly identified prior to transporting to the laboratory.</li> </ol>
<b>Additional Information</b>	<b>The preservation tubes cannot be used for urine biochemistry, chlamydia, gonorrhea or drug of abuse testing, only a separate first stream sample will be accepted.</b>
<b>Specimen Conservation and Stability</b>	<ul style="list-style-type: none"> <li>• Urine Culture in preservative tube: up to 48 hours room temperature</li> <li>• Urinalysis in preservative tube: 72hours room temperature</li> </ul> <p>Note : Specimens should be stored in preservation tube to ensure the stability.</p>



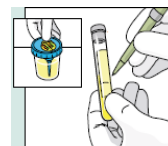
Step 4



Step 5 to 8



Step 9 to 12



Step 13