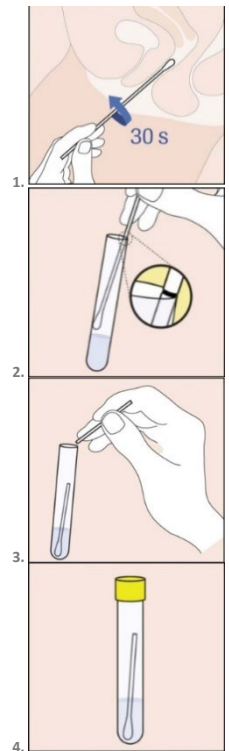
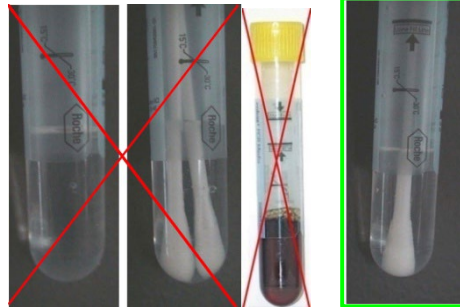


**CHLAMYDIA AND GONORRHEA BY PCR**

<b>Document number</b>	LA-75-WI-030E_04.20
<b>Revision date</b>	2024-Avr-24
<b>Required specimen type</b>	<b>Men:</b> urine, throat or rectal sample. <b>Women:</b> urine, throat, rectal, vaginal or endocervical sample.
<b>Medical supplies</b>	<ul style="list-style-type: none"> <li>• <b>Men:</b> sterile urine container only.</li> <li>• <b>Women:</b> sterile urine container or Cobas® PCR collection kit.</li> <li>• <b>Men and women:</b> Biohazard bag</li> </ul>
<b>General Guidelines</b>	<ol style="list-style-type: none"> <li>1) All specimens must include a double identification (first and last name of the patient and date of birth or Medicare number).</li> <li>2) The use of gloves is required when handling all biological specimens.</li> <li>3) A valid requisition must include the following information :             <ul style="list-style-type: none"> <li>• First and last name of the patient, date of birth or Medicare number and gender.</li> <li>• Date and time of specimen collection and signature of collector.</li> <li>• Physician's full name, signature and license number (or other qualified prescriber).</li> <li>• Any relevant clinical information.</li> <li>• Requested tests.</li> </ul> </li> </ol>
<b>Patient preparation</b>	<u>Urine container (male and female)</u> <ul style="list-style-type: none"> <li>• It is recommended not to urinate for at least one (1) hour prior to specimen collection.</li> <li>• <b>Women:</b> <ol style="list-style-type: none"> <li>a. Physician should be informed if menstruating;</li> <li>b. Do not clean the labial area before specimen collection.</li> </ol> </li> </ul> <u>PCR collection Kit (female only)</u> <b>Do not</b> wet the swab in the Cobas® PCR Media tube before collecting the sample.
<b>Specimen Collection Instruction</b>	<u>Urine container (male and female):</u> <b>First Stream Urine</b> <ol style="list-style-type: none"> <li>1) Wash hands with soap and water;</li> <li>2) Open sterile container;</li> <li>3) Urinate in the container. A minimum volume of 10 mL is required for analysis. If necessary, continue to urinate in the toilet if container is full;</li> <li>4) Tightly close the container;</li> <li>5) Return sample as soon as possible to your physician or the laboratory.</li> </ol> <u>PCR collection Kit (female only)</u> <b>Vaginal Sample</b> <ol style="list-style-type: none"> <li>1) Insert swab at a 5 cm depth in the vaginal opening.</li> <li>2) Slowly rotate swab for 30 seconds while touching the vaginal wall. (Picture 1)</li> <li>3) Slowly remove the swab.</li> <li>4) The swab must not come in contact with any other surface before putting it back in the tube.</li> <li>5) Remove the cap from the Cobas® PCR tube and insert the swab into the tube until black line on the swab stem is aligned with the tube's rim. The tip of the swab should be just above the media surface near the hexagonal Roche logo. (Picture 2)</li> <li>6) Carefully tilt the swab against the tube's rim and break the swab stem at the level of the black line; discard the top portion of the swab. (Picture 3)</li> <li>7) Tightly re-cap the Cobas® PCR tube. The specimen is now ready for transport. (Picture 4)</li> </ol>



- 8) The sample will be rejected if :
- There is no swab in the tube;
  - There are two (2) swabs in the tube;
  - The sample is dark brown or bloody.


**Endocervical sample**

- Using one of the swabs provided, remove the excess mucus from the cervical and surrounding mucosa. Discard the swab after use.
- To collect the specimen, insert the other swab provided into the endocervical canal.
- Gently rotate the swab 5 times in one direction in the endocervical canal. Do not over-rotate. Carefully withdraw the swab, avoiding any contact with the vaginal mucosa.
- See vaginal sample collection step 5 to step 8.

**Throat sample**

- Insert the swab into the mouth and collect the specimen from the posterior pharynx, both tonsils and avoid touching the tongue and the uvula. Withdraw the swab without touching any surface and place the swab tip into the STM tube.
- Specimens received with **2 or NO SWAB** inside in STM **will be rejected.**

**Rectal sample**

Insert the swab 3 – 5 cm, into the anal canal. Gently turn the swab for about 5 – 10 seconds while running the swab against the walls of the rectum. If the swab is grossly contaminated with feces, discard the swab and repeat the collection. Place the swab tip first into the STM tube.

*Specimens received with **2 or NO SWAB** inside in STM **will be rejected.***

**Additional information**

N/A

**Specimen Conservation and Stability**

- Fresh urine : 24 hours between 2°C and 30°C  
 Cobas® PCR collection kit
- Urine: 12 months, between 2°C and 30°C
  - Vaginal, throat or rectal samples : 90 days between 2°C and 30°C
  - Endocervical and cervical sample : 12 months between 2°C and 30°C